

6 Drawer X-Tall Emergency Cart (UXRLU-333669-RED)

 waterloohealthcare.com/product/6-drawer-x-tall-steel-crash-cart





Waterloo made its name in emergency carts back in the 1950s, and is still the most recognized name in emergency carts today. Our traditional steel carts are an economical option that will last for decades to come.

KEY FEATURES:

- Economical steel construction
- Single pull out work shelf
- Transport lock keeps drawers secured during rapid transit

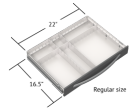
SKU: UXRLU-333669-RED Category: [Emergency Crash Carts](#) Tag: [Emergency Cart Steel](#)

SPECIFICATIONS

Frame Type: STEEL STANDARD
 Frame Size: X-TALL
 Dimensions: 29"w x 24.5"d x 45"h



Drawer Dimensions:
 22"w x 16.5"d



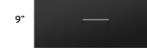
Drawer Height: 3-3-3-6-6-9



3
drawers



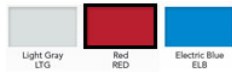
2
drawer



1
drawer



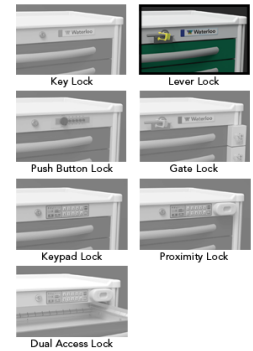
Frame Color: RED



Drawer Color:
 RED



Lock System: LEVER LOCK



Top: REMOVABLE PLASTIC



Bumpers:
 STABILIZER
 BASE



Casters: 5" STANDARD

